

## \$60,000 - Na Avenue, Edmonton

MLS® #E4409359

**\$60,000**

0 Bedroom, 0.00 Bathroom,  
Business on 0.00 Acres

Strathcona Junction, Edmonton, AB

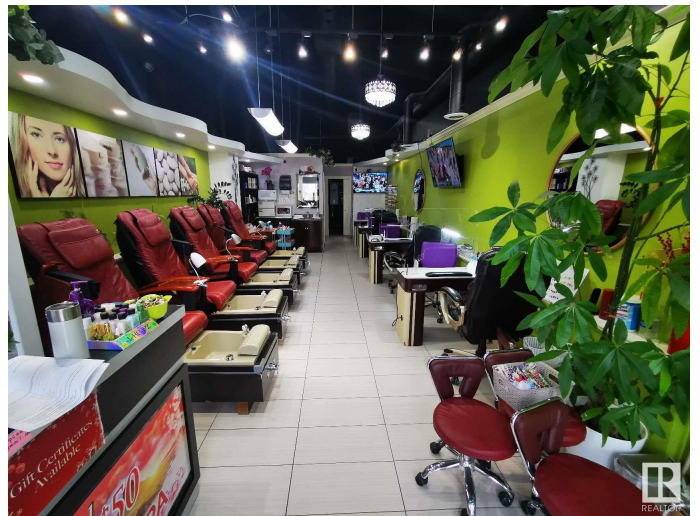
High Exposure! Great turn key opportunity in this 634 sqft Nail Salon & Spa located in the busy shopping plaza by Whyte Ave, Strathcona, 5 pedicure chairs & 3 nail stations, waxing room, laundry room & bathroom. Very Reasonable rent for the next 5 years recently renewed. Start working for yourself or expanding your business with this once a lifetime opportunity. Credit check required by the landlord!

### Essential Information

MLS® #	E4409359
Price	\$60,000
Bathrooms	0.00
Acres	0.00
Type	Business
Status	Active

### Community Information

Address	Na Avenue
Area	Edmonton
Subdivision	Strathcona Junction
City	Edmonton
County	ALBERTA
Province	AB
Postal Code	T6E 6T2



## Additional Information

Date Listed            October 6th, 2024

Days on Market      181

Zoning                Zone 41

DATA IS DEEMED RELIABLE BUT IS NOT GUARANTEED ACCURATE BY THE REALTORS® ASSOCIATION OF EDMONTON. COPYRIGHT 2025 BY THE REALTORS® ASSOCIATION OF EDMONTON. ALL RIGHTS RESERVED. Trademarks are owned or controlled by the Canadian Real Estate Association (CREA) and identify real estate professionals who are members of CREA (REALTOR®, REALTORS®) and/or the quality of services they provide (MLS®, Multiple Listing Service®)

Listing information last updated on April 5th, 2025 at 1:32pm MDT