

# \$189,000 - 210 11520 100 Avenue, Edmonton

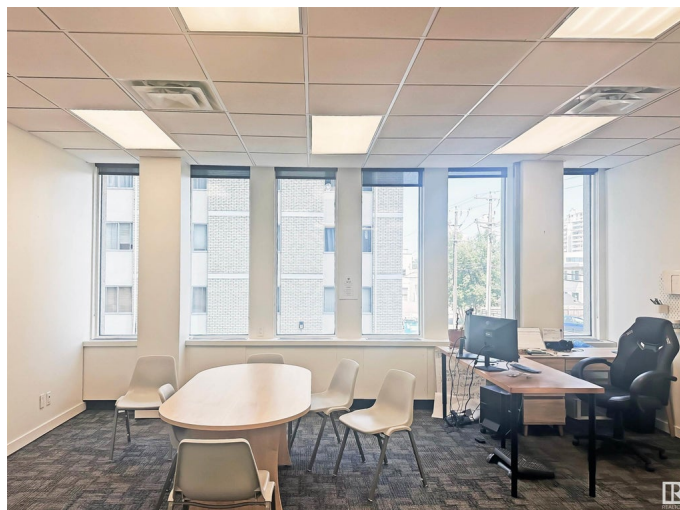
MLS® #E4409537

**\$189,000**

0 Bedroom, 0.00 Bathroom,  
Office on 0.00 Acres

W&hkw&antwin, Edmonton, AB

Fantastic opportunity to own your office space in the heart of Edmonton's Oliver neighbourhood. This unique corner unit offers plenty of natural light and an efficient floor plan. With flexible zoning, permitting a multitude of uses, and the ability to easily remove or add offices/meeting rooms, this unit can accommodate a wide variety of businesses. With easy accessibility, assigned covered parking and recent building upgrades, this office condo is perfect for professionals. Plus, enjoy immediate access to local retail amenities, and the river valley located just steps away. Highlights: Elevator accessible, Nearby amenities, Recent building facade upgrades, Proximity to public transit



Built in 1969

## Essential Information

MLS® #	E4409537
Price	\$189,000
Bathrooms	0.00
Acres	0.00
Year Built	1969
Type	Office
Status	Active

## Community Information

Address 210 11520 100 Avenue

Area	Edmonton
Subdivision	W&hkw&antwin
City	Edmonton
County	ALBERTA
Province	AB
Postal Code	T5K 0J7

### Exterior

Exterior	Concrete
Construction	Concrete

### Additional Information

Date Listed	October 8th, 2024
Days on Market	179
Zoning	Zone 12

DATA IS DEEMED RELIABLE BUT IS NOT GUARANTEED ACCURATE BY THE REALTORS® ASSOCIATION OF EDMONTON. COPYRIGHT 2025 BY THE REALTORS® ASSOCIATION OF EDMONTON. ALL RIGHTS RESERVED. Trademarks are owned or controlled by the Canadian Real Estate Association (CREA) and identify real estate professionals who are members of CREA (REALTOR®, REALTORS®) and/or the quality of services they provide (MLS®, Multiple Listing Service®)

Listing information last updated on April 5th, 2025 at 12:32pm MDT