

\$1,995,000 - 2807 Wheaton Drive, Edmonton

MLS® #E4410255

\$1,995,000

5 Bedroom, 5.50 Bathroom, 3,750 sqft
Single Family on 0.00 Acres

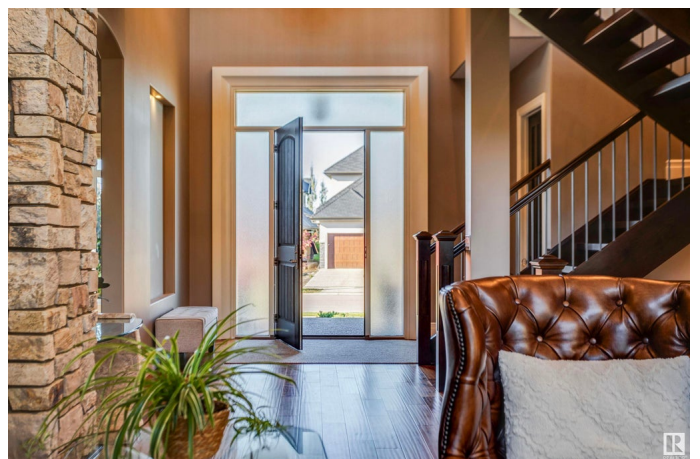
Windermere, Edmonton, AB

Welcome to Windermere. From the twenty-foot foyer, you're greeted by a sense of opulence and warmth. Bathed in natural light, there is a perfect balance of grandeur with vaulted ceilings and a striking fireplace surrounded by state-of-the-art design. A gourmet kitchen is the heart of this home, with premium Wolf and Sub-Zero appliances and a butler's pantry providing modern convenience! The dining area spans to a peaceful deck overlooking the private backyard; setting a sophisticated tone. The primary suite is a tranquil retreat with spa bath, separate laundry and walk-in closet. The office/den makes this area feel like a home within a home. Upstairs, the sense of space and comfort continues, with three bedrooms, a family room, laundry and two beautifully appointed full bathrooms. The finished basement is a world of its own. Heated floors lead to a home gym, a movie theatre plus a legal two-bedroom suite; ideal for family or guests. Designed to offer a lifestyle that's as luxurious as it is comfortable.

Built in 2016

Essential Information

MLS® #	E4410255
Price	\$1,995,000



Bedrooms	5
Bathrooms	5.50
Full Baths	5
Half Baths	1
Square Footage	3,750
Acres	0.00
Year Built	2016
Type	Single Family
Sub-Type	Detached Single Family
Style	2 Storey
Status	Active

Community Information

Address	2807 Wheaton Drive
Area	Edmonton
Subdivision	Windermere
City	Edmonton
County	ALBERTA
Province	AB
Postal Code	T6W 2M6

Amenities

Amenities	Air Conditioner, Carbon Monoxide Detectors, Ceiling 10 ft., Front Porch, Hot Water Tankless, Insulation-Upgraded, No Animal Home, No Smoking Home, Patio, Smart/Program. Thermostat, Walkout Basement, See Remarks, Vacuum System-Roughed-In
Parking Spaces	6
Parking	Front Drive Access, Heated, Triple Garage Attached

Interior

Interior Features	ensuite bathroom
Appliances	Air Cleaner-Electronic, Air Conditioning-Central, Hood Fan, Microwave Hood Fan, Oven-Built-In, Oven-Microwave, Stove-Countertop Gas, Stove-Electric, Water Softener, Window Coverings, Wine/Beverage Cooler, Dryer-Two, Refrigerators-Two, Washers-Two, Dishwasher-Two
Heating	Forced Air-2, Natural Gas
Fireplace	Yes
Fireplaces	Stone Facing
Stories	3

Has Basement Yes
Basement Full, Finished

Exterior

Exterior Wood, Stone, Stucco
Exterior Features Golf Nearby, Landscaped, Low Maintenance Landscape, Playground Nearby, Public Transportation, Schools, Shopping Nearby, See Remarks, Partially Fenced
Roof Clay Tile
Construction Wood, Stone, Stucco
Foundation Concrete Perimeter

School Information

Elementary Constable Daniel Woodall
Middle Riverbend
High Lillian Osborne

Additional Information

Date Listed October 13th, 2024
Days on Market 174
Zoning Zone 56
HOA Fees 639
HOA Fees Freq. Annually

DATA IS DEEMED RELIABLE BUT IS NOT GUARANTEED ACCURATE BY THE REALTORS® ASSOCIATION OF EDMONTON. COPYRIGHT 2025 BY THE REALTORS® ASSOCIATION OF EDMONTON. ALL RIGHTS RESERVED. Trademarks are owned or controlled by the Canadian Real Estate Association (CREA) and identify real estate professionals who are members of CREA (REALTOR®, REALTORS®) and/or the quality of services they provide (MLS®, Multiple Listing Service®)

Listing information last updated on April 5th, 2025 at 12:32pm MDT