

# \$82,900 - Ne 8-48-6-w5, Rural Brazeau County

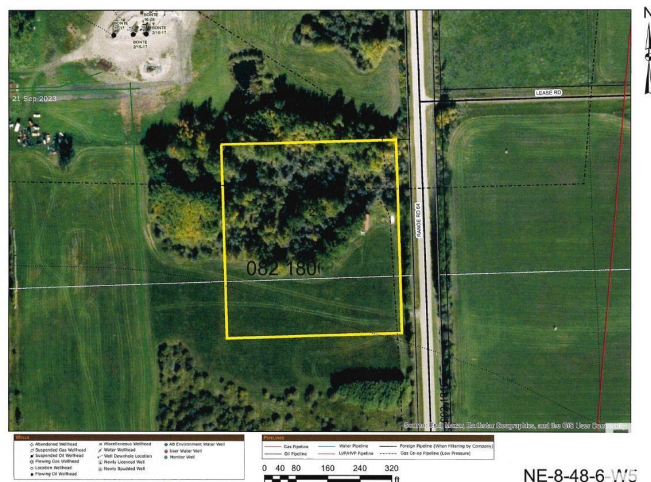
MLS® #E4411519

**\$82,900**

0 Bedroom, 0.00 Bathroom,  
Rural on 4.99 Acres

None, Rural Brazeau County, AB

5 acre parcel located just one mile off of highway 22. A nice mixture of half treed and half open land. Nice and private location.



## Essential Information

MLS® #	E4411519
Price	\$82,900
Bathrooms	0.00
Acres	4.99
Type	Rural
Sub-Type	Vacant Lot/Land
Status	Active

## Community Information

Address	Ne 8-48-6-w5
Area	Rural Brazeau County
Subdivision	None
City	Rural Brazeau County
County	ALBERTA
Province	AB
Postal Code	T0C 0S0

## Exterior

Exterior Features Flat Site, Recreation Use, Pa



## Additional Information

Date Listed October 23rd, 2024

Days on Market 141

Zoning Zone 90

DATA IS DEEMED RELIABLE BUT IS NOT GUARANTEED ACCURATE BY THE REALTORS® ASSOCIATION OF EDMONTON. COPYRIGHT 2025 BY THE REALTORS® ASSOCIATION OF EDMONTON. ALL RIGHTS RESERVED. Trademarks are owned or controlled by the Canadian Real Estate Association (CREA) and identify real estate professionals who are members of CREA (REALTOR®, REALTORS®) and/or the quality of services they provide (MLS®, Multiple Listing Service®)

Listing information last updated on March 13th, 2025 at 7:32pm MDT