

# **\$850,000 - 19 54129 Rge Road 275, Rural Parkland County**

MLS® #E4413574

**\$850,000**

3 Bedroom, 3.00 Bathroom, 3,845 sqft

Rural on 3.16 Acres

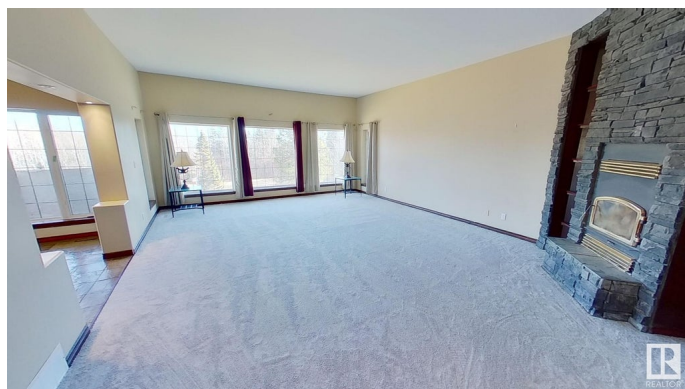
Surrey Lane, Rural Parkland County, AB

This beautiful executive home is in a desirable community in Surrey Lane. This bungalow is just under 4000 square feet and is located on top of the hill. This home offers 2 master bedrooms with private ensuites and each with their own fireplace and private decks plus one extra bedroom and a large office. In the heart of the home you will find your gourmet kitchen with granite counters and a huge island and tons of cabinets. All the space and tools you will ever need to cook and entertain, and kitchen opens to a spacious breakfast nook and a great room with floor to ceiling fireplace. Triple attached garage with RV tall door.

Built in 2001

## **Essential Information**

MLS® #	E4413574
Price	\$850,000
Bedrooms	3
Bathrooms	3.00
Full Baths	3
Square Footage	3,845
Acres	3.16
Year Built	2001
Type	Rural
Sub-Type	Detached Single Family



Style	Bungalow
Status	Active

### Community Information

Address	19 54129 Rge Road 275
Area	Rural Parkland County
Subdivision	Surrey Lane
City	Rural Parkland County
County	ALBERTA
Province	AB
Postal Code	T7X 3S4

### Amenities

Features	Ceiling 10 ft., Closet Organizers, Crawl Space, Deck, Front Porch, Hot Water Natural Gas, Vaulted Ceiling, Vinyl Windows
----------	--

### Interior

Interior Features	ensuite bathroom
Heating	Forced Air-2, Natural Gas
Fireplace	Yes
Stories	1
Has Basement	Yes
Basement	None, No Basement

### Exterior

Exterior	Wood
Exterior Features	Airport Nearby, Golf Nearby, Landscaped, Private Setting, Treed Lot
Construction	Wood
Foundation	Concrete Perimeter

### Additional Information

Date Listed	November 14th, 2024
Days on Market	157
Zoning	Zone 70

DATA IS DEEMED RELIABLE BUT IS NOT GUARANTEED ACCURATE BY THE REALTORS® ASSOCIATION OF EDMONTON. COPYRIGHT 2025 BY THE REALTORS® ASSOCIATION OF EDMONTON. ALL RIGHTS RESERVED. Trademarks are owned or controlled by the Canadian Real Estate Association (CREA) and identify real estate professionals who are members of CREA (REALTOR®, REALTORS®) and/or the quality of services they provide (MLS®, Multiple Listing Service®)

Listing information last updated on April 20th, 2025 at 4:32am MDT