

# \$0 - 24521 Twp Rd 510, Nisku

MLS® #E4417378

**\$0**

0 Bedroom, 0.00 Bathroom,  
Industrial on 0.00 Acres

None, Nisku, AB

LEASE OPPORTUNITY! 56,546 sq. ft warehouse and office on 3.65 acres. Large open span warehouse equipped with 5 - ton crane. Multiple offices and reception area. Large graveled fenced yard with option of additional land available. Lots of parking. Office and warehouse are demisable.

Built in 2007

## Essential Information

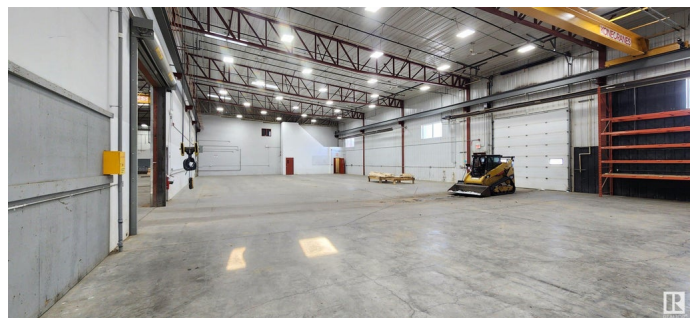
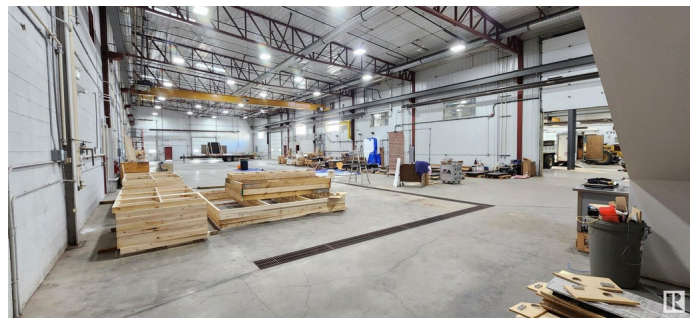
|            |            |
|------------|------------|
| MLS® #     | E4417378   |
| Bathrooms  | 0.00       |
| Acres      | 0.00       |
| Year Built | 2007       |
| Type       | Industrial |
| Status     | Active     |

## Community Information

|             |                  |
|-------------|------------------|
| Address     | 24521 Twp Rd 510 |
| Area        | Nisku            |
| Subdivision | None             |
| City        | Nisku            |
| County      | ALBERTA          |
| Province    | AB               |
| Postal Code | T6X 4N6          |

## Exterior

|          |             |
|----------|-------------|
| Exterior | See Remarks |
|----------|-------------|



Construction      See Remarks

### **Additional Information**

Date Listed      January 6th, 2025

Days on Market    91

Zoning            Zone 80

DATA IS DEEMED RELIABLE BUT IS NOT GUARANTEED ACCURATE BY THE REALTORS® ASSOCIATION OF EDMONTON. COPYRIGHT 2025 BY THE REALTORS® ASSOCIATION OF EDMONTON. ALL RIGHTS RESERVED. Trademarks are owned or controlled by the Canadian Real Estate Association (CREA) and identify real estate professionals who are members of CREA (REALTOR®, REALTORS®) and/or the quality of services they provide (MLS®, Multiple Listing Service®)

Listing information last updated on April 7th, 2025 at 6:32am MDT