

\$10,000 - Na Na, Edmonton

MLS® #E4419828

\$10,000

0 Bedroom, 0.00 Bathroom,
Business on 0.00 Acres

Queen Alexandra, Edmonton, AB

This 1931 sqft COFFEE shop has new DESIGN and new reno. Located right on busy and HIGH traffic spot. Open concept with VIP room inside. You can put new kitchen at the back of the store. Or you can easy to change different menu. Subject to landlord approval. Close to U of A area. Reasonable rent and PRICE TO SELL.

Essential Information

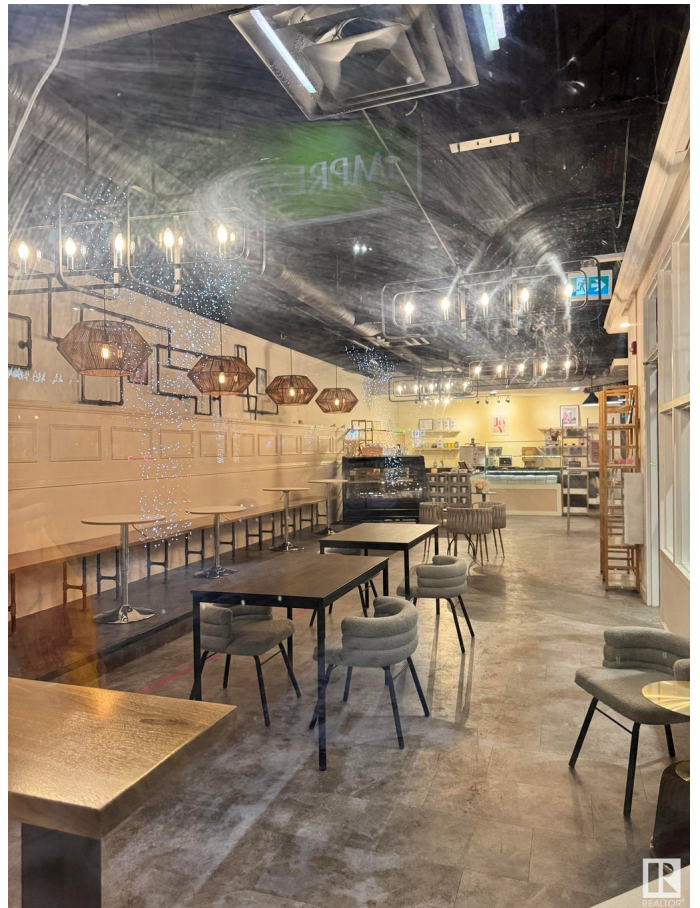
| | |
|-----------|----------|
| MLS® # | E4419828 |
| Price | \$10,000 |
| Bathrooms | 0.00 |
| Acres | 0.00 |
| Type | Business |
| Status | Active |

Community Information

| | |
|-------------|-----------------|
| Address | Na Na |
| Area | Edmonton |
| Subdivision | Queen Alexandra |
| City | Edmonton |
| County | ALBERTA |
| Province | AB |
| Postal Code | T6E 2B2 |

Additional Information

| | |
|-------------|--------------------|
| Date Listed | January 31st, 2025 |
|-------------|--------------------|



| | |
|----------------|---------|
| Days on Market | 66 |
| Zoning | Zone 15 |

DATA IS DEEMED RELIABLE BUT IS NOT GUARANTEED ACCURATE BY THE REALTORS® ASSOCIATION OF EDMONTON. COPYRIGHT 2025 BY THE REALTORS® ASSOCIATION OF EDMONTON. ALL RIGHTS RESERVED. Trademarks are owned or controlled by the Canadian Real Estate Association (CREA) and identify real estate professionals who are members of CREA (REALTOR®, REALTORS®) and/or the quality of services they provide (MLS®, Multiple Listing Service®)

Listing information last updated on April 7th, 2025 at 3:47pm MDT