

\$888,888 - 880 Ebbers Crescent, Edmonton

MLS® #E4422524

\$888,888

6 Bedroom, 4.00 Bathroom, 2,510 sqft
Single Family on 0.00 Acres

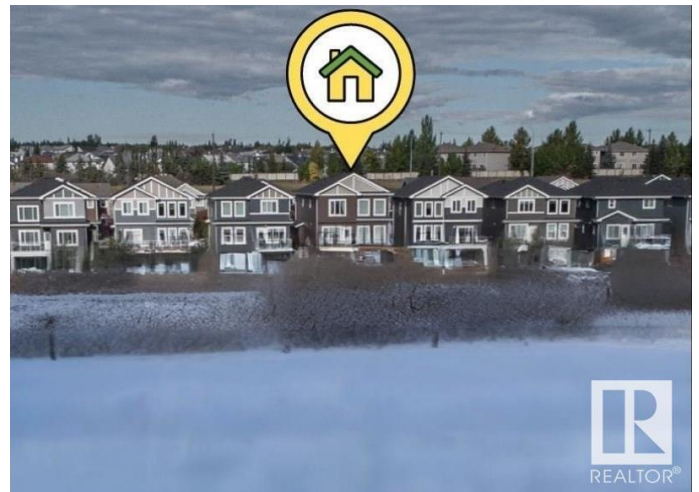
Ebbers, Edmonton, AB

Experience the perfect fusion of luxury and investment potential in this stunning 2,500 sq ft, 7-bedroom two-storey home, backing onto a breathtaking live pond. The walkout basement boasts a fully legal 2-bedroom suite with a private entrance, modern finishes, and a functional layout—an exceptional opportunity to generate rental income or offset mortgage costs. Nature is your backdrop, with serene water views framed by expansive picture windows, seamlessly blending upscale living with financial savvy. The main floor features a dazzling chef’s kitchen with high-end built-ins, a walk-through pantry & opulent gold accents. Upstairs, the hotel-like master suite, stylish loft & upper-level laundry add sophistication & convenience. High-end architectural details elevate the elegance throughout. Whether you're investing in your future or indulging in refined living, this home offers both wealth-building potential and an unmatched connection to nature. Whatever stage your family is at, this home is for you! WOW!

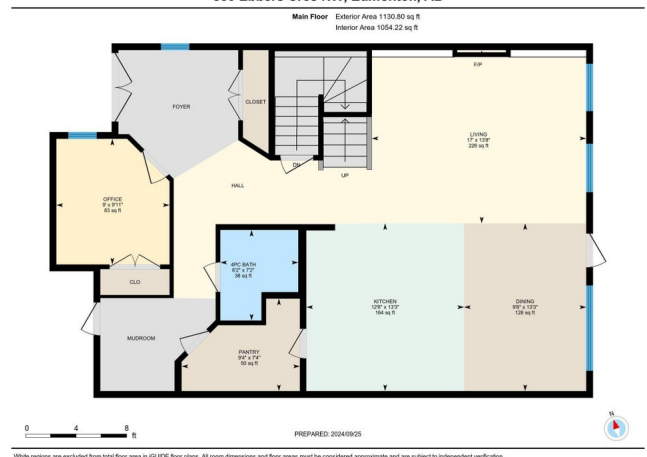
Built in 2021

Essential Information

MLS® # E4422524
Price \$888,888



880 Ebbers Cres NW, Edmonton, AB



| | |
|----------------|------------------------|
| Bedrooms | 6 |
| Bathrooms | 4.00 |
| Full Baths | 4 |
| Square Footage | 2,510 |
| Acres | 0.00 |
| Year Built | 2021 |
| Type | Single Family |
| Sub-Type | Detached Single Family |
| Style | 2 Storey |
| Status | Active |

Community Information

| | |
|-------------|---------------------|
| Address | 880 Ebbers Crescent |
| Area | Edmonton |
| Subdivision | Ebbers |
| City | Edmonton |
| County | ALBERTA |
| Province | AB |
| Postal Code | T5Y 3V1 |

Amenities

| | |
|----------------|--|
| Amenities | Ceiling 9 ft., Deck, Exterior Walls- 2"x6", Gazebo, No Smoking Home, Patio, Smart/Program. Thermostat, Vinyl Windows, Walkout Basement, 9 ft. Basement Ceiling |
| Parking Spaces | 4 |
| Parking | Double Garage Attached, Insulated, Over Sized |
| Is Waterfront | Yes |

Interior

| | |
|-------------------|--|
| Interior Features | ensuite bathroom |
| Appliances | Dishwasher-Built-In, Garage Control, Garage Opener, Hood Fan, Oven-Built-In, Oven-Microwave, Stove-Countertop Gas, Stove-Electric, Window Coverings, Dryer-Two, Refrigerators-Two, Washers-Two |
| Heating | Forced Air-2, Natural Gas |
| Fireplace | Yes |
| Fireplaces | Heatilator/Fan |
| Stories | 3 |
| Has Basement | Yes |
| Basement | Full, Finished |

Exterior

| | |
|-------------------|--|
| Exterior | Wood, Vinyl |
| Exterior Features | Backs Onto Lake, Fenced, Landscaped, Park/Reserve, Playground Nearby, Public Transportation, Shopping Nearby |
| Roof | Asphalt Shingles |
| Construction | Wood, Vinyl |
| Foundation | Concrete Perimeter |

Additional Information

| | |
|----------------|---------------------|
| Date Listed | February 21st, 2025 |
| Days on Market | 48 |
| Zoning | Zone 02 |

DATA IS DEEMED RELIABLE BUT IS NOT GUARANTEED ACCURATE BY THE REALTORS® ASSOCIATION OF EDMONTON. COPYRIGHT 2025 BY THE REALTORS® ASSOCIATION OF EDMONTON. ALL RIGHTS RESERVED. Trademarks are owned or controlled by the Canadian Real Estate Association (CREA) and identify real estate professionals who are members of CREA (REALTOR®, REALTORS®) and/or the quality of services they provide (MLS®, Multiple Listing Service®)

Listing information last updated on April 10th, 2025 at 3:02am MDT