

\$178,800 - 206 10731 84 Avenue, Edmonton

MLS® #E4423455

\$178,800

2 Bedroom, 1.00 Bathroom, 908 sqft
Condo / Townhouse on 0.00 Acres

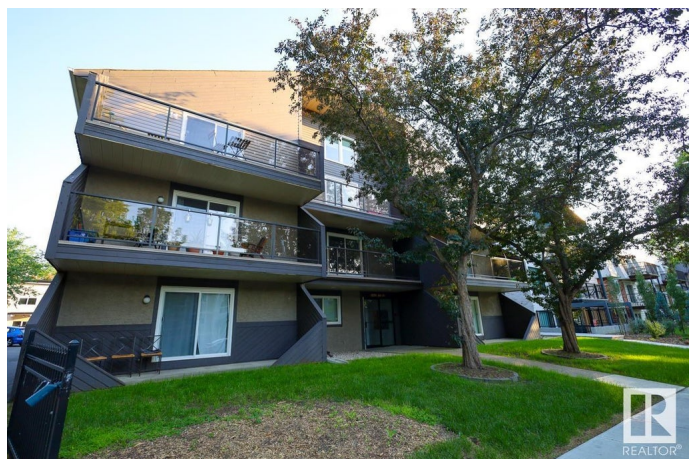
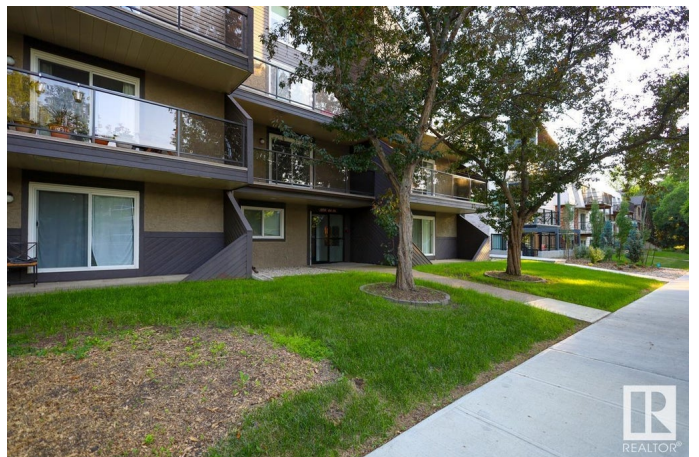
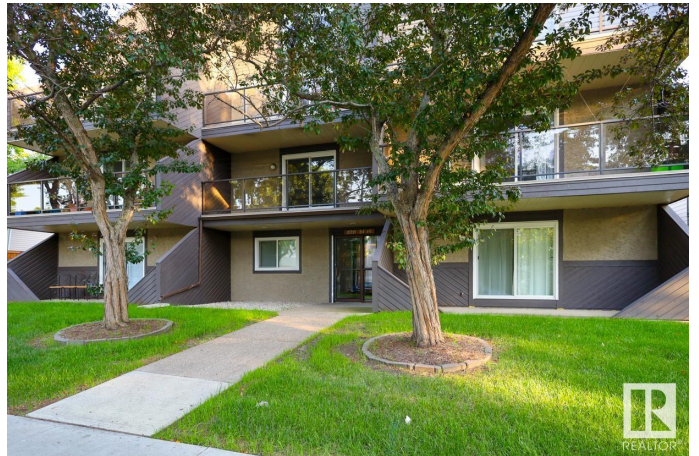
Garneau, Edmonton, AB

Welcome to Faculty House, nestled in the heart of the highly desirable Garneau community. Just steps from vibrant Whyte Ave yet situated on a peaceful street, this location offers the best of both worlds. Close proximity to the University of Alberta makes it ideal for students and investors alike. The home features brand new vinyl plank flooring and fresh paint throughout. With 2 spacious bedrooms and an assigned parking stall, convenience is at your doorstep. Enjoy quick access to public transportation, making it easy to explore the city. Don't miss this fantastic opportunity at a great price!

Built in 1983

Essential Information

MLS® #	E4423455
Price	\$178,800
Bedrooms	2
Bathrooms	1.00
Full Baths	1
Square Footage	908
Acres	0.00
Year Built	1983
Type	Condo / Townhouse
Sub-Type	Lowrise Apartment
Style	Single Level Apartment



Status Active

Community Information

Address 206 10731 84 Avenue
Area Edmonton
Subdivision Garneau
City Edmonton
County ALBERTA
Province AB
Postal Code T6E 2H8

Amenities

Amenities On Street Parking, No Animal Home, No Smoking Home
Parking Stall

Interior

Appliances Dishwasher-Built-In, Hood Fan, Refrigerator, Stove-Electric
Heating Baseboard, Natural Gas
of Stories 3
Stories 3
Has Basement Yes
Basement None, No Basement

Exterior

Exterior Wood, Stucco
Exterior Features Back Lane, Public Transportation, Schools, Shopping Nearby
Roof Asphalt Shingles
Construction Wood, Stucco
Foundation Concrete Perimeter

Additional Information

Date Listed February 28th, 2025
Days on Market 36
Zoning Zone 15
Condo Fee \$468

DATA IS DEEMED RELIABLE BUT IS NOT GUARANTEED ACCURATE BY THE REALTORS® ASSOCIATION OF EDMONTON. COPYRIGHT 2025 BY THE REALTORS® ASSOCIATION OF EDMONTON. ALL RIGHTS RESERVED. Trademarks are owned or controlled by the Canadian Real Estate Association (CREA) and identify real estate professionals who are members of CREA (REALTOR®, REALTORS®) and/or the quality of services they provide (MLS®, Multiple Listing Service®)

Listing information last updated on April 5th, 2025 at 12:32pm MDT