

\$799,000 - 38 Elwyck Gate, Spruce Grove

MLS® #E4424002

\$799,000

4 Bedroom, 4.00 Bathroom, 2,901 sqft

Single Family on 0.00 Acres

Fenwyck, Spruce Grove, AB

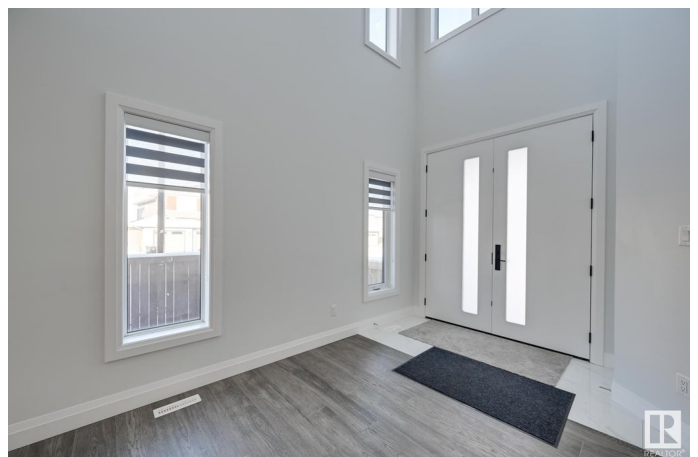
Luxury Living at Its Finest in Fenwyck. Experience the epitome of luxury in this stunning 4-bedroom, 4-full-bathroom estate nestled in the prestigious community of Fenwyck, Spruce Grove. Unparalleled Upgrades. This magnificent property boasts an array of exceptional features, including Spice kitchen for the culinary enthusiast. Den on the main floor with bathroom, perfect for a home office or guest suite. Elegant formal dining area for special occasions. Cozy family room with fireplace for relaxing evenings. Triple attached garage with heat, perfect for car enthusiasts. Stamped concrete driveway adding to the property's curb appeal Exquisite Design. With its thoughtful design and impeccable finishes, this estate offers the perfect blend of sophistication and functionality. The expansive layout, complete with four spacious bedrooms and four luxurious bathrooms, provides ample space for family and friends. Prime Location. Fenwyck's desirable community offers easy access to schools, park, Shopping and HWY

Built in 2022

Essential Information

MLS® # E4424002

Price \$799,000



Bedrooms	4
Bathrooms	4.00
Full Baths	4
Square Footage	2,901
Acres	0.00
Year Built	2022
Type	Single Family
Sub-Type	Detached Single Family
Style	2 Storey
Status	Active

Community Information

Address	38 Elwyck Gate
Area	Spruce Grove
Subdivision	Fenwyck
City	Spruce Grove
County	ALBERTA
Province	AB
Postal Code	T7X 0Z2

Amenities

Amenities	See Remarks
Parking	Triple Garage Attached

Interior

Interior Features	ensuite bathroom
Appliances	Dishwasher-Built-In, Dryer, Garage Control, Garage Opener, Hood Fan, Oven-Built-In, Oven-Microwave, Refrigerator, Stove-Countertop Electric, Stove-Gas, Washer, Window Coverings
Heating	Forced Air-1, Natural Gas
Stories	2
Has Basement	Yes
Basement	Full, Unfinished

Exterior

Exterior	Wood, Stone, Vinyl
Exterior Features	See Remarks
Roof	Asphalt Shingles
Construction	Wood, Stone, Vinyl

Foundation Concrete Perimeter

Additional Information

Date Listed March 5th, 2025

Days on Market 45

Zoning Zone 91

DATA IS DEEMED RELIABLE BUT IS NOT GUARANTEED ACCURATE BY THE REALTORS® ASSOCIATION OF EDMONTON. COPYRIGHT 2025 BY THE REALTORS® ASSOCIATION OF EDMONTON. ALL RIGHTS RESERVED.Trademarks are owned or controlled by the Canadian Real Estate Association (CREA) and identify real estate professionals who are members of CREA (REALTOR®, REALTORS®) and/or the quality of services they provide (MLS®, Multiple Listing Service®)

Listing information last updated on April 19th, 2025 at 6:02am MDT