

\$825,000 - Rr271 Twp 494, Rural Leduc County

MLS® #E4424381

\$825,000

0 Bedroom, 0.00 Bathroom,

Rural on 79.82 Acres

None, Rural Leduc County, AB

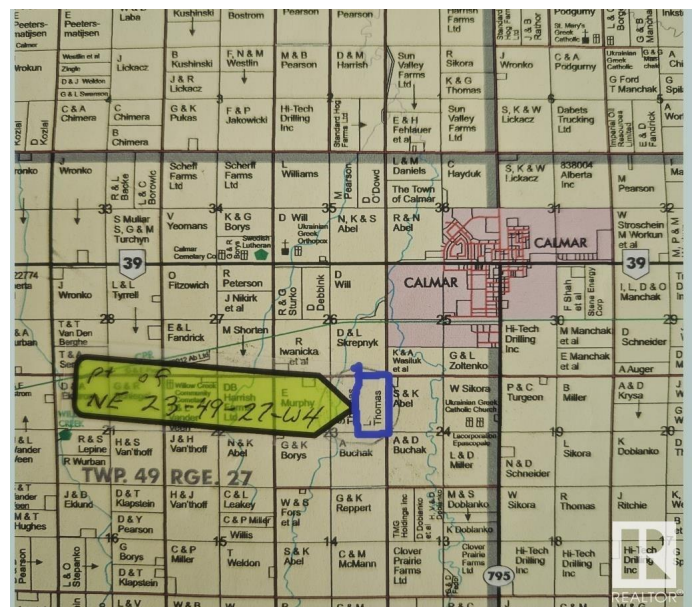
80 acres with Great investment or Development potential. This high-quality farmland is 1 mile from Calmar. The land is rented out for crops which brings annual income plus there is a lease road also bringing revenue. Keep it as it is reaping the revenue, keep it for future growth or build on it. This property has untold possibilities. GST may apply.

Essential Information

MLS® #	E4424381
Price	\$825,000
Bathrooms	0.00
Acres	79.82
Type	Rural
Sub-Type	Vacant Lot/Land
Status	Active

Community Information

Address	Rr271 Twp 494
Area	Rural Leduc County
Subdivision	None
City	Rural Leduc County
County	ALBERTA
Province	AB
Postal Code	T0C 0V0



Exterior

Exterior Features Not Fenced, Schools, Shopping Nearby, See Remarks

Additional Information

Date Listed March 6th, 2025
Days on Market 41
Zoning Zone 90

DATA IS DEEMED RELIABLE BUT IS NOT GUARANTEED ACCURATE BY THE REALTORS® ASSOCIATION OF EDMONTON. COPYRIGHT 2025 BY THE REALTORS® ASSOCIATION OF EDMONTON. ALL RIGHTS RESERVED.Trademarks are owned or controlled by the Canadian Real Estate Association (CREA) and identify real estate professionals who are members of CREA (REALTOR®, REALTORS®) and/or the quality of services they provide (MLS®, Multiple Listing Service®)
Listing information last updated on April 16th, 2025 at 12:48pm MDT