

\$689,000 - 1044 Armitage Crescent, Edmonton

MLS® #E4425159

\$689,000

6 Bedroom, 4.00 Bathroom, 2,485 sqft
Single Family on 0.00 Acres

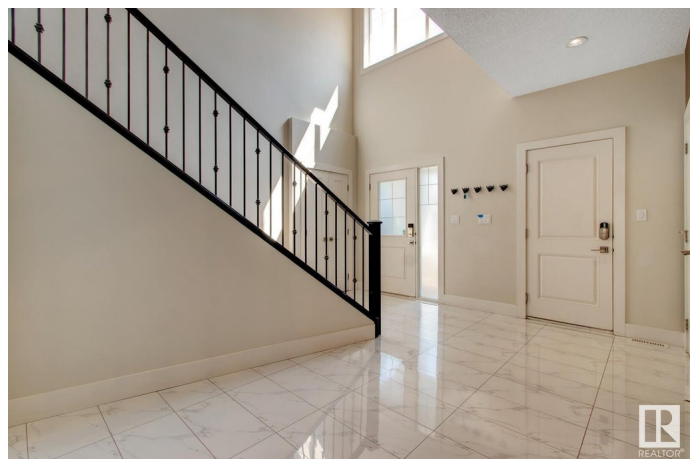
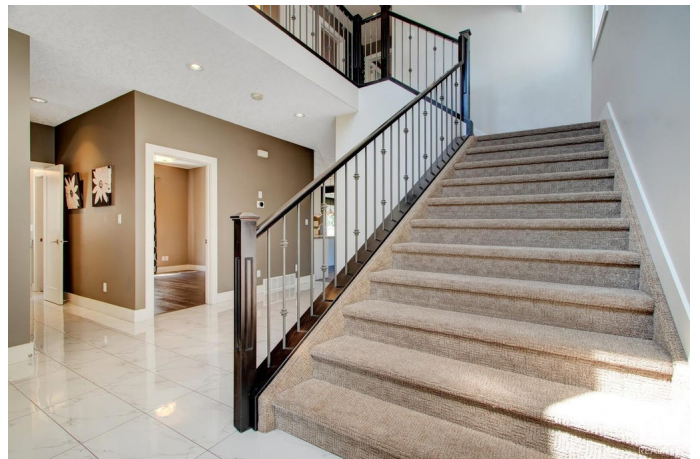
Ambleside, Edmonton, AB

Looking for a beautiful place to live? Then welcome home! Lovely street in sought-after Ambleside near every amenity imaginable with easy access to the Henday and the airport... enjoy a full separate mother-in-law suite with a separate entrance and TWO BEDROOMS/SPA BATH/FULL KITCHEN/LIVING ROOM in the lower level - perfect for family/teens or guests. The basement is not a legal suite. Upstairs enjoy nearly 2500 SF that includes a bedroom and full 4-piece bath and on the main level, a bonus room and 3 bedrooms up. Granite countertops throughout, upstairs laundry, plush carpet, engineered hardwood, a stunning vaulted bonus room. Close to amazing schools. All this house needs is someone to move in and love it!

Built in 2013

Essential Information

MLS® #	E4425159
Price	\$689,000
Bedrooms	6
Bathrooms	4.00
Full Baths	4
Square Footage	2,485
Acres	0.00
Year Built	2013



Type	Single Family
Sub-Type	Detached Single Family
Style	2 Storey
Status	Active

Community Information

Address	1044 Armitage Crescent
Area	Edmonton
Subdivision	Ambleside
City	Edmonton
County	ALBERTA
Province	AB
Postal Code	T6W 0K8

Amenities

Amenities	Air Conditioner, Ceiling 9 ft., Deck
Parking Spaces	4
Parking	Double Garage Attached, Heated, Insulated

Interior

Interior Features	ensuite bathroom
Appliances	Air Conditioning-Central, Garage Control, Garage Opener, Oven-Built-In, Oven-Microwave, Stove-Countertop Gas, Stove-Electric, Window Coverings, Dryer-Two, Refrigerators-Two, Washers-Two, Dishwasher-Two
Heating	Forced Air-1, Natural Gas
Fireplace	Yes
Fireplaces	Glass Door
Stories	3
Has Basement	Yes
Basement	Full, Finished

Exterior

Exterior	Wood, Stone, Vinyl
Exterior Features	Fenced, Landscaped, Playground Nearby, Public Transportation, Schools, Shopping Nearby
Roof	Asphalt Shingles
Construction	Wood, Stone, Vinyl
Foundation	Concrete Perimeter

School Information

Elementary	Margaret-Ann Armour School
Middle	Margaret-Ann Armour School
High	Lillian Osborne School

Additional Information

Date Listed	March 11th, 2025
Days on Market	2
Zoning	Zone 56
HOA Fees	150
HOA Fees Freq.	Annually

DATA IS DEEMED RELIABLE BUT IS NOT GUARANTEED ACCURATE BY THE REALTORS® ASSOCIATION OF EDMONTON. COPYRIGHT 2025 BY THE REALTORS® ASSOCIATION OF EDMONTON. ALL RIGHTS RESERVED. Trademarks are owned or controlled by the Canadian Real Estate Association (CREA) and identify real estate professionals who are members of CREA (REALTOR®, REALTORS®) and/or the quality of services they provide (MLS®, Multiple Listing Service®)

Listing information last updated on March 13th, 2025 at 8:17pm MDT