

## \$415,000 - 4321 Prowse Link Link, Edmonton

MLS® #E4425229

**\$415,000**

3 Bedroom, 2.50 Bathroom, 1,361 sqft  
Single Family on 0.00 Acres

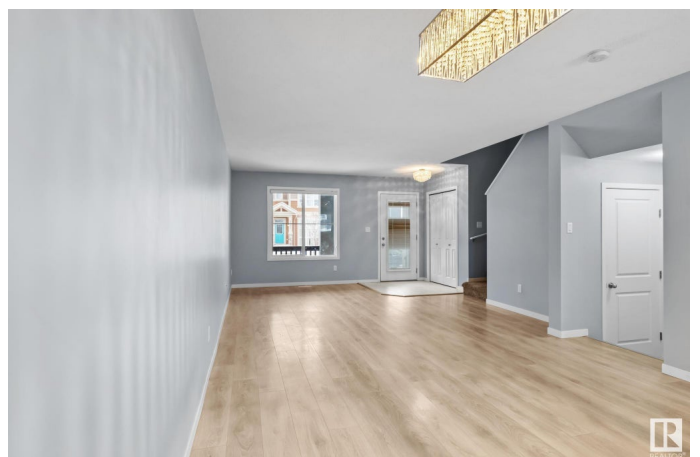
Paisley, Edmonton, AB

Welcome to this end-unit residential attached home with a detached double garage in the vibrant community of Paisley built by Brookfield with one single owner that is priced to sell! The charming front porch leads into a bright, open-concept main floor. The spacious kitchen boasts stainless steel appliances, modern cabinetry, and an island with a quartz countertop, while the dining area comes with a modern chandelier. A 2-pc bathroom is also on the main floor. Upstairs, the primary suite features a walk-in closet and 4-pc ensuite, plus two more bedrooms and another full bath with laundry on the upper floor. The unfinished basement is a blank canvas for your ideas. Outside, enjoy a fully fenced backyard with a spacious deck. Located minutes from schools, shopping, dining, Jagare Ridge Golf Club, Calgary Trail and Anthony Henday!

Built in 2018

### Essential Information

MLS® #	E4425229
Price	\$415,000
Bedrooms	3
Bathrooms	2.50
Full Baths	2
Half Baths	1
Square Footage	1,361



Acres	0.00
Year Built	2018
Type	Single Family
Sub-Type	Residential Attached
Style	2 Storey
Status	Active

### **Community Information**

Address	4321 Prowse Link Link
Area	Edmonton
Subdivision	Paisley
City	Edmonton
County	ALBERTA
Province	AB
Postal Code	T6W 3A7

### **Amenities**

Amenities	Deck
Parking	Double Garage Detached

### **Interior**

Interior Features	ensuite bathroom
Appliances	Dishwasher-Built-In, Microwave Hood Fan, Refrigerator, Stacked Washer/Dryer, Stove-Electric
Heating	Forced Air-1, Natural Gas
Stories	2
Has Basement	Yes
Basement	Full, Unfinished

### **Exterior**

Exterior	Wood, Vinyl
Exterior Features	Airport Nearby, Fenced, Landscaped, Schools
Roof	Asphalt Shingles
Construction	Wood, Vinyl
Foundation	Concrete Perimeter

### **Additional Information**

Date Listed	March 12th, 2025
Days on Market	25

## Zoning

## Zone 55

DATA IS DEEMED RELIABLE BUT IS NOT GUARANTEED ACCURATE BY THE REALTORS® ASSOCIATION OF EDMONTON. COPYRIGHT 2025 BY THE REALTORS® ASSOCIATION OF EDMONTON. ALL RIGHTS RESERVED. Trademarks are owned or controlled by the Canadian Real Estate Association (CREA) and identify real estate professionals who are members of CREA (REALTOR®, REALTORS®) and/or the quality of services they provide (MLS®, Multiple Listing Service®)

Listing information last updated on April 6th, 2025 at 3:47am MDT