

\$534,900 - 7043 22 Avenue, Edmonton

MLS® #E4425665

\$534,900

4 Bedroom, 3.50 Bathroom, 1,605 sqft

Single Family on 0.00 Acres

Summerside, Edmonton, AB

Welcome to the community of Summerside where residence have access to a swimmable lake! This stunning home offers coziness, functionality, class and character. The main floor welcomes you with a den that can be your home office/gym or a nice little hangout spot. The kitchen is equipped with granite counter tops, a walk-in pantry and an extended counter top island that is facing the dining area which is perfect for hosting. Then, you will find the massive living room with huge windows that permits a lot of natural light. Upstairs you will find the spacious master's bedroom and 2 other bedrooms. The fully finished basement offers a 4th bedroom a bathroom and a recreation area. The basement could also be accessed by a separate entrance so you can use it as a short-term rental that can help with your mortgage. Instead of a garage, this home has an over-sized parking cement pad that can easily fit up to 4 cars or long trucks and even RV campers!

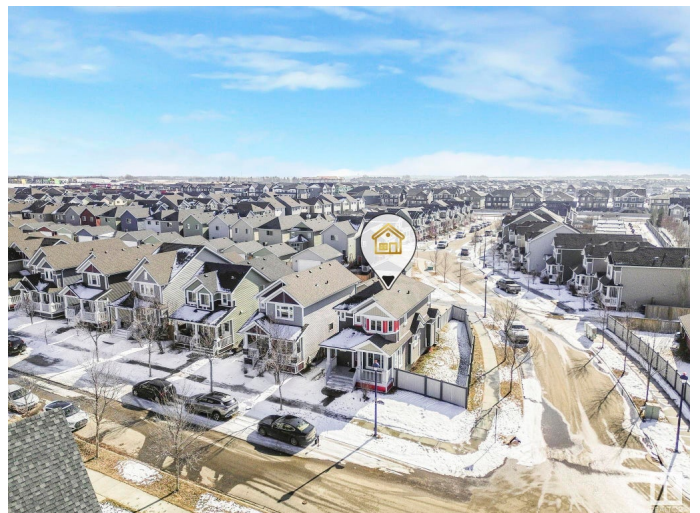
Built in 2013

Essential Information

MLS® # E4425665

Price \$534,900

Bedrooms 4



Bathrooms	3.50
Full Baths	3
Half Baths	1
Square Footage	1,605
Acres	0.00
Year Built	2013
Type	Single Family
Sub-Type	Detached Single Family
Style	2 Storey
Status	Active

Community Information

Address	7043 22 Avenue
Area	Edmonton
Subdivision	Summerside
City	Edmonton
County	ALBERTA
Province	AB
Postal Code	T6X 0T8

Amenities

Amenities	On Street Parking, Ceiling 9 ft., Deck, Lake Privileges, No Smoking Home
Parking	Over Sized, Parking Pad Cement/Paved

Interior

Interior Features	ensuite bathroom
Appliances	Dishwasher-Built-In, Dryer, Microwave Hood Fan, Refrigerator, Stove-Electric, Washer
Heating	Forced Air-1, Natural Gas
Stories	3
Has Basement	Yes
Basement	Full, Finished

Exterior

Exterior	Wood, Vinyl
Exterior Features	Airport Nearby, Corner Lot, Fenced, Lake Access Property, Low Maintenance Landscape, Park/Reserve, Paved Lane, Picnic Area, Playground Nearby, Schools, Shopping Nearby, See Remarks, Private Park Access

Roof	Asphalt Shingles
Construction	Wood, Vinyl
Foundation	Slab

Additional Information

Date Listed	March 14th, 2025
Days on Market	34
Zoning	Zone 53
HOA Fees	463
HOA Fees Freq.	Annually

DATA IS DEEMED RELIABLE BUT IS NOT GUARANTEED ACCURATE BY THE REALTORS® ASSOCIATION OF EDMONTON. COPYRIGHT 2025 BY THE REALTORS® ASSOCIATION OF EDMONTON. ALL RIGHTS RESERVED. Trademarks are owned or controlled by the Canadian Real Estate Association (CREA) and identify real estate professionals who are members of CREA (REALTOR®, REALTORS®) and/or the quality of services they provide (MLS®, Multiple Listing Service®)

Listing information last updated on April 17th, 2025 at 9:17am MDT