

\$299,000 - 126 10333 112 Street, Edmonton

MLS® #E4426133

\$299,000

3 Bedroom, 2.50 Bathroom, 1,199 sqft
Condo / Townhouse on 0.00 Acres

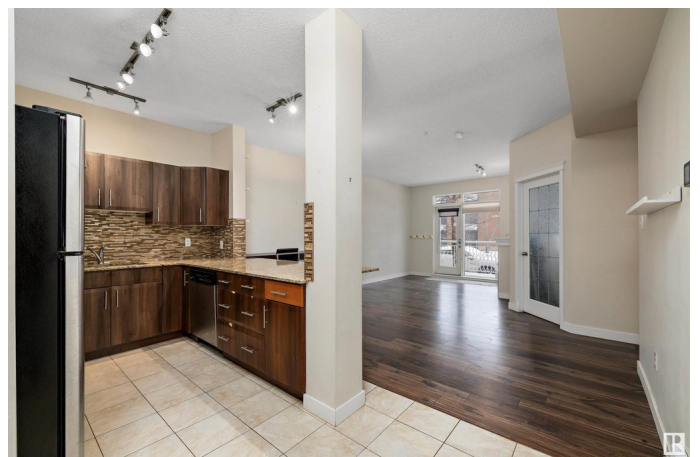
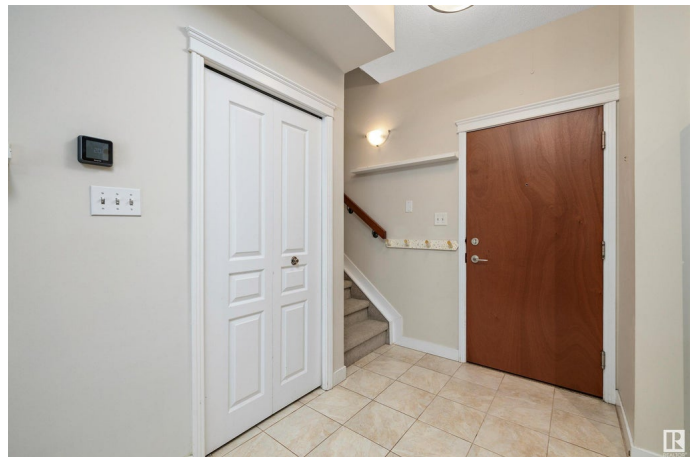
W&hkw&ant&win, Edmonton, AB

Downtown living at it's best with this 1199 sq foot townhouse style condo in The Venetian. You won't feel cramped or crowded with lot's of space on two levels. Upper level features a spacious master bedroom with 3 piece ensuite as well as a second bedroom and full 4 piece bath. A laundry/storage room completes the upstairs. The main floor is an open concept layout with a roomy kitchen that flows into the dining room/living room area that has an electric fireplace and a patio door to a private balcony/terrace area with a street view. In suite heat pump for all your heating and cooling needs and year round comfort. Building features include concrete and steel construction, air conditioning, fitness room, secure bike storage and heated underground parking. With two levels and direct street access , this is a rare find in the west Downtown area and doesn't feel like an apartment building at all. Close to Rogers, GMCC, shopping and transit. Very walkable area with everything close at hand. Immediate possession.

Built in 2008

Essential Information

MLS® #	E4426133
Price	\$299,000



Bedrooms	3
Bathrooms	2.50
Full Baths	2
Half Baths	1
Square Footage	1,199
Acres	0.00
Year Built	2008
Type	Condo / Townhouse
Sub-Type	Lowrise Apartment
Style	Multi Level Apartment
Status	Active

Community Information

Address	126 10333 112 Street
Area	Edmonton
Subdivision	WÃ©hkwÃ©ntÃ©win
City	Edmonton
County	ALBERTA
Province	AB
Postal Code	T5K 0B4

Amenities

Amenities	Air Conditioner, Exercise Room, Parking-Visitor, Secured Parking
Parking	Heated, Parkade, Underground

Interior

Interior Features	ensuite bathroom
Appliances	Air Conditioning-Central, Dishwasher-Built-In, Dryer, Refrigerator, Stove-Electric, Washer, Window Coverings
Heating	Heat Pump, Natural Gas
Fireplace	Yes
Fireplaces	Corner
# of Stories	6
Stories	2
Has Basement	Yes
Basement	None, No Basement

Exterior

Exterior	Concrete, Stucco
----------	------------------

Exterior Features	Playground Nearby, Public Swimming Pool, Public Transportation, Schools, Shopping Nearby
Roof	Tar & Gravel
Construction	Concrete, Stucco
Foundation	Concrete Perimeter

School Information

Elementary	Oliver School
Middle	Westminster School
High	Victoria School

Additional Information

Date Listed	March 17th, 2025
Days on Market	28
Zoning	Zone 12
Condo Fee	\$785

DATA IS DEEMED RELIABLE BUT IS NOT GUARANTEED ACCURATE BY THE REALTORS® ASSOCIATION OF EDMONTON. COPYRIGHT 2025 BY THE REALTORS® ASSOCIATION OF EDMONTON. ALL RIGHTS RESERVED. Trademarks are owned or controlled by the Canadian Real Estate Association (CREA) and identify real estate professionals who are members of CREA (REALTOR®, REALTORS®) and/or the quality of services they provide (MLS®, Multiple Listing Service®)

Listing information last updated on April 14th, 2025 at 5:02am MDT