

# \$1,699,800 - 9859 85 Avenue, Edmonton

MLS® #E4426236

**\$1,699,800**

0 Bedroom, 0.00 Bathroom,  
Multi-Family Commercial on 0.00 Acres

Strathcona, Edmonton, AB

Fantastic investment opportunity in Strathcona - newly built 6 units multi-family building on a quiet street close to Mill Creek Ravine with quick commute to YEG Downtown! Each unit has own separate entrance from outside with TWO bedrooms plus a living room, one full bath, kitchen with granite countertops and stainless steel appliances, and in-suite laundry with washer/dryer. Two units on each level. Great investment property to add into your portfolio!

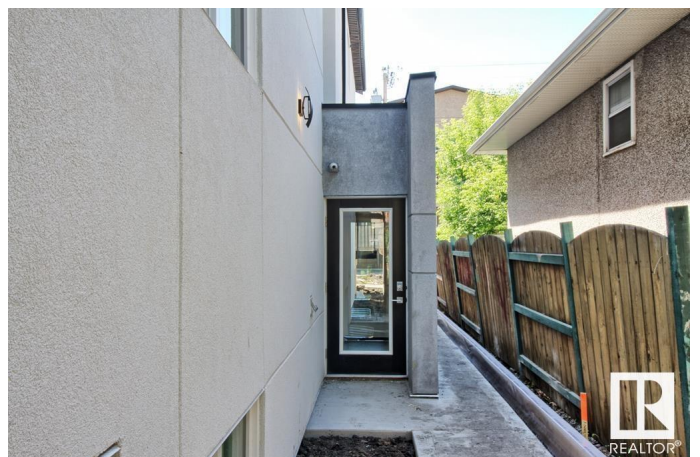
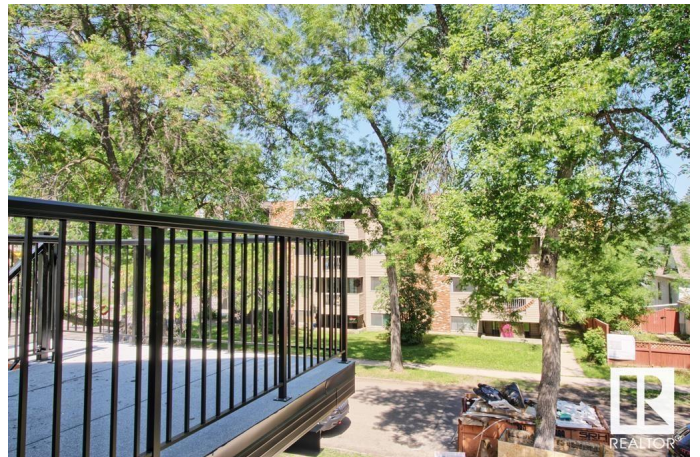
Built in 2019

## Essential Information

|            |                         |
|------------|-------------------------|
| MLS® #     | E4426236                |
| Price      | \$1,699,800             |
| Bathrooms  | 0.00                    |
| Acres      | 0.00                    |
| Year Built | 2019                    |
| Type       | Multi-Family Commercial |
| Status     | Active                  |

## Community Information

|             |                |
|-------------|----------------|
| Address     | 9859 85 Avenue |
| Area        | Edmonton       |
| Subdivision | Strathcona     |
| City        | Edmonton       |
| County      | ALBERTA        |



Province AB  
Postal Code T6E 2J5

### **Exterior**

Exterior Wood Frame  
Construction Wood Frame

### **Additional Information**

Date Listed March 18th, 2025  
Days on Market 17  
Zoning Zone 15

DATA IS DEEMED RELIABLE BUT IS NOT GUARANTEED ACCURATE BY THE REALTORS® ASSOCIATION OF EDMONTON. COPYRIGHT 2025 BY THE REALTORS® ASSOCIATION OF EDMONTON. ALL RIGHTS RESERVED. Trademarks are owned or controlled by the Canadian Real Estate Association (CREA) and identify real estate professionals who are members of CREA (REALTOR®, REALTORS®) and/or the quality of services they provide (MLS®, Multiple Listing Service®)

Listing information last updated on April 4th, 2025 at 4:47pm MDT