

\$600,000 - 9115 143 St, Edmonton

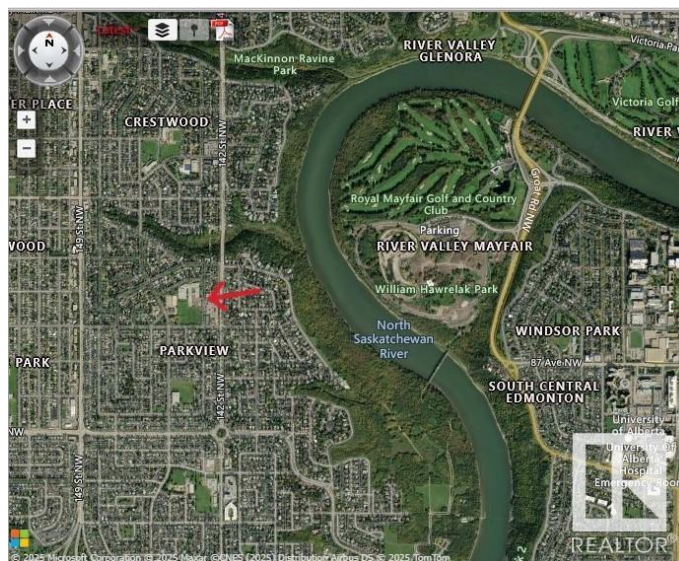
MLS® #E4426888

\$600,000

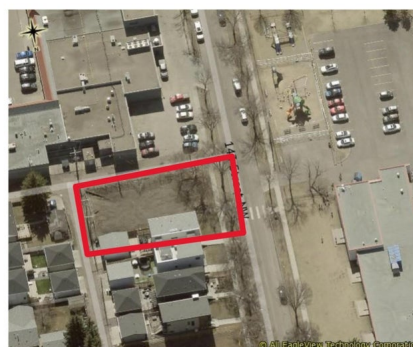
0 Bedroom, 0.00 Bathroom,
Single Family on 0.00 Acres

Parkview, Edmonton, AB

This 600 SQM corner lot in the heart of Parkview offers exceptional potential for future development. The seller has rezoned it to Small-Medium Scale Transition Residential Zone, allowing for residential developments up to four storeys, including row housing and multi-unit housing. Single detached, semi-detached, and duplex homes are only permitted as part of a larger multi-unit project. The zoning provides a transition between small-scale and larger-scale residential developments, while also allowing limited community and commercial spaces to serve local residents. Parkview is one of Edmonton's most desirable communities, offering tree-lined streets, spacious lots, and stunning ravine views just minutes from downtown. With a strong sense of community, local shops, parks, and river valley trails, it is an ideal place to live. The neighborhood is served by Parkview School (K-9) and St. Rose Junior High, making it a perfect location for families seeking urban convenience with natural beauty.



9115 143 St-Location



04/22/2024

9115 143 St-Location



04/22/2024

Essential Information

MLS® #	E4426888
Price	\$600,000
Bathrooms	0.00

Acres	0.00
Type	Single Family
Sub-Type	Vacant Lot/Land
Status	Active

Community Information

Address	9115 143 St
Area	Edmonton
Subdivision	Parkview
City	Edmonton
County	ALBERTA
Province	AB
Postal Code	T5R 0P5

Exterior

Exterior Features Commercial, Corner Lot, Playground Nearby, Public Transportation, Schools, Shopping Nearby, See Remarks

Additional Information

Date Listed	March 21st, 2025
Days on Market	20
Zoning	Zone 10

DATA IS DEEMED RELIABLE BUT IS NOT GUARANTEED ACCURATE BY THE REALTORS® ASSOCIATION OF EDMONTON. COPYRIGHT 2025 BY THE REALTORS® ASSOCIATION OF EDMONTON. ALL RIGHTS RESERVED. Trademarks are owned or controlled by the Canadian Real Estate Association (CREA) and identify real estate professionals who are members of CREA (REALTOR®, REALTORS®) and/or the quality of services they provide (MLS®, Multiple Listing Service®)

Listing information last updated on April 10th, 2025 at 12:32am MDT