

\$499,900 - 1434 Keswick Drive, Edmonton

MLS® #E4427571

\$499,900

4 Bedroom, 3.50 Bathroom, 1,532 sqft
Single Family on 0.00 Acres

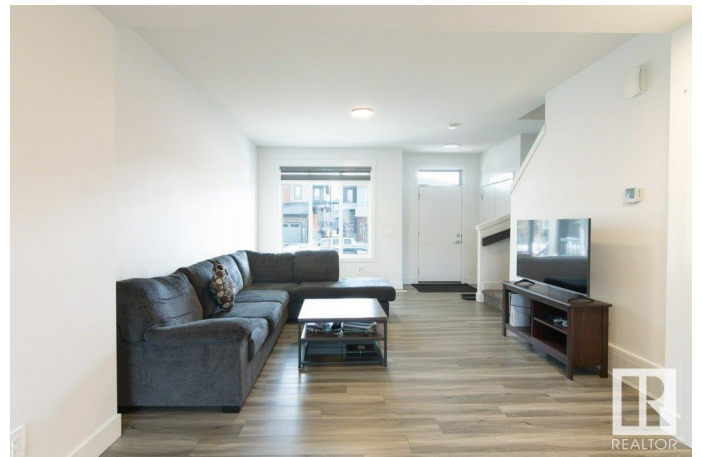
Keswick Area, Edmonton, AB

SIMPLY GORGEOUS! This 4 bedroom, 3.5 bath **END UNIT** townhome, with **NO CONDO FEES**, is located in the fabulous new community of Keswick. Beautifully finished throughout featuring lots of upgrades including 9 ft. ceilings, quartz countertops and in-law suite with a **SEPARATE SIDE ENTRANCE!** The bright main floor has a sunny living room which opens to the contemporary white Euro style kitchen with quality appliances and large island. The spacious upper level has 3 generous bedrooms, the primary with a large w/l closet, ensuite and is completed with a loft and laundry room. The **FULLY DEVELOPED** basement has an in-law suite with a separate entrance, 2nd kitchen, bedroom, family room and it's own laundry. Just steps from the park, walking trails and major shopping – this impressive property must be seen! Take a look!

Built in 2022

Essential Information

MLS® #	E4427571
Price	\$499,900
Bedrooms	4
Bathrooms	3.50
Full Baths	3
Half Baths	1



Square Footage	1,532
Acres	0.00
Year Built	2022
Type	Single Family
Sub-Type	Residential Attached
Style	2 Storey
Status	Active

Community Information

Address	1434 Keswick Drive
Area	Edmonton
Subdivision	Keswick Area
City	Edmonton
County	ALBERTA
Province	AB
Postal Code	T6W 4T9

Amenities

Amenities	Ceiling 9 ft., Detectors Smoke
Parking Spaces	4
Parking	Double Garage Detached

Interior

Interior Features	ensuite bathroom
Appliances	Dishwasher-Built-In, Window Coverings, Dryer-Two, Refrigerators-Two, Stoves-Two, Washers-Two, Microwave Hood Fan-Two
Heating	Forced Air-1, Natural Gas
Stories	3
Has Basement	Yes
Basement	Full, Finished

Exterior

Exterior	Wood, Vinyl
Exterior Features	Park/Reserve, Playground Nearby, Public Transportation, Schools, Shopping Nearby
Roof	Asphalt Shingles
Construction	Wood, Vinyl
Foundation	Concrete Perimeter

Additional Information

Date Listed March 26th, 2025

Days on Market 10

Zoning Zone 56

HOA Fees Freq. Annually

DATA IS DEEMED RELIABLE BUT IS NOT GUARANTEED ACCURATE BY THE REALTORS® ASSOCIATION OF EDMONTON. COPYRIGHT 2025 BY THE REALTORS® ASSOCIATION OF EDMONTON. ALL RIGHTS RESERVED. Trademarks are owned or controlled by the Canadian Real Estate Association (CREA) and identify real estate professionals who are members of CREA (REALTOR®, REALTORS®) and/or the quality of services they provide (MLS®, Multiple Listing Service®)

Listing information last updated on April 5th, 2025 at 2:47am MDT