

\$259,000 - 204 Kingsfield Village, Leduc

MLS® #E4428357

\$259,000

3 Bedroom, 2.00 Bathroom, 1,480 sqft
Condo / Townhouse on 0.00 Acres

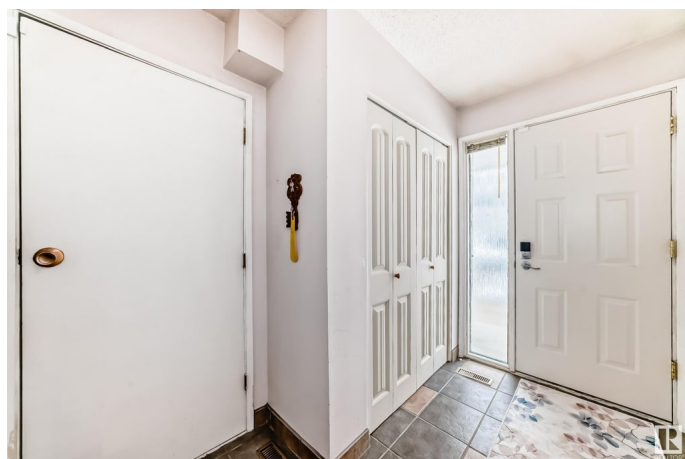
Leduc Estates, Leduc, AB

This great value townhouse in Leduc Estates with attached single garage is perfect for first-time home buyers! With low condo fees of just \$344.84 / month, including water and sewer, this 4-level split home is a perfect opportunity. The open living and dining area features a newer electric fireplace and flows seamlessly to a large deck through patio doors, leading to a chain-link fenced yard, backing a greenspace. Key updates include a furnace, hot water tank, washer, and stove—all less than five years old. Upstairs, you'll find three bedrooms, with the primary suite having a 2-piece ensuite. Location is ideal with walking distance to schools, shopping, parks and trails.

Built in 1976

Essential Information

MLS® #	E4428357
Price	\$259,000
Bedrooms	3
Bathrooms	2.00
Full Baths	1
Half Baths	2
Square Footage	1,480
Acres	0.00
Year Built	1976



Type	Condo / Townhouse
Sub-Type	Townhouse
Style	4 Level Split
Status	Active

Community Information

Address	204 Kingsfield Village
Area	Leduc
Subdivision	Leduc Estates
City	Leduc
County	ALBERTA
Province	AB
Postal Code	T9E 5K2

Amenities

Amenities	Deck
Parking	Single Garage Attached

Interior

Interior Features	ensuite bathroom
Appliances	Dishwasher-Built-In, Dryer, Garage Control, Garage Opener, Refrigerator, Stove-Electric, Washer, Window Coverings
Heating	Forced Air-1, Natural Gas
Stories	3
Has Basement	Yes
Basement	Partial, Partially Finished

Exterior

Exterior	Wood, Vinyl
Exterior Features	Airport Nearby, Fenced, Golf Nearby, Landscaped, Playground Nearby, Schools, Shopping Nearby
Roof	Asphalt Shingles
Construction	Wood, Vinyl
Foundation	Concrete Perimeter

Additional Information

Date Listed	April 1st, 2025
Days on Market	15
Zoning	Zone 81

Condo Fee \$345

DATA IS DEEMED RELIABLE BUT IS NOT GUARANTEED ACCURATE BY THE REALTORS® ASSOCIATION OF EDMONTON. COPYRIGHT 2025 BY THE REALTORS® ASSOCIATION OF EDMONTON. ALL RIGHTS RESERVED. Trademarks are owned or controlled by the Canadian Real Estate Association (CREA) and identify real estate professionals who are members of CREA (REALTOR®, REALTORS®) and/or the quality of services they provide (MLS®, Multiple Listing Service®)

Listing information last updated on April 16th, 2025 at 9:47am MDT