

\$299,900 - 1902 10238 103 Street, Edmonton

MLS® #E4429348

\$299,900

2 Bedroom, 1.00 Bathroom, 581 sqft
Condo / Townhouse on 0.00 Acres

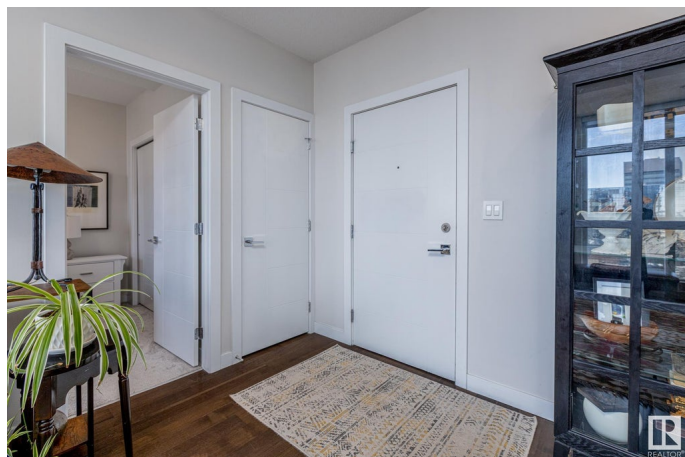
Downtown (Edmonton), Edmonton, AB

Welcome to this immaculate 2-bedroom unit in the heart of Edmonton's vibrant ICE District! Located on the 19th floor, this condo offers breathtaking views of Rogers Place, downtown, and stunning sunrises right from your private balcony. Floor-to-ceiling windows flood the space with natural light, highlighting the modern finishes including quartz countertops, stainless steel appliances, in-suite laundry, and air conditioning. Enjoy exclusive access to premium building amenities including a fitness center, hot tub, outdoor patio, and a social room. Titled underground parking stall with storage cage is included for your convenience. Located directly across from Loblaws City Market and surrounded by some of Edmonton's best shops, dining, and entertainment—this location is unbeatable!

Built in 2016

Essential Information

MLS® #	E4429348
Price	\$299,900
Bedrooms	2
Bathrooms	1.00
Full Baths	1
Square Footage	581
Acres	0.00



Year Built	2016
Type	Condo / Townhouse
Sub-Type	Apartment High Rise
Style	Single Level Apartment
Status	Active

Community Information

Address	1902 10238 103 Street
Area	Edmonton
Subdivision	Downtown (Edmonton)
City	Edmonton
County	ALBERTA
Province	AB
Postal Code	T5J 0G6

Amenities

Amenities	Air Conditioner, Bar, Detectors Smoke, Exercise Room, Hot Tub, No Animal Home, Parking-Extra, Parking-Plug-Ins, Parking-Visitor, Party Room, Patio, Recreation Room/Centre, Secured Parking, Social Rooms, Concierge Service
Parking Spaces	1
Parking	Underground

Interior

Interior Features	ensuite bathroom
Appliances	Air Conditioning-Central, Dishwasher-Built-In, Dryer, Microwave Hood Fan, Refrigerator, Stove-Electric, Washer, Window Coverings
Heating	Forced Air-1, Natural Gas
# of Stories	33
Stories	1
Has Basement	Yes
Basement	None, No Basement

Exterior

Exterior	Concrete, Brick, Metal
Exterior Features	Golf Nearby, Picnic Area, Playground Nearby, Shopping Nearby, View City, View Downtown
Roof	EPDM Membrane
Construction	Concrete, Brick, Metal
Foundation	Concrete Perimeter

Additional Information

Date Listed	April 5th, 2025
Days on Market	4
Zoning	Zone 12
Condo Fee	\$423

DATA IS DEEMED RELIABLE BUT IS NOT GUARANTEED ACCURATE BY THE REALTORS® ASSOCIATION OF EDMONTON. COPYRIGHT 2025 BY THE REALTORS® ASSOCIATION OF EDMONTON. ALL RIGHTS RESERVED. Trademarks are owned or controlled by the Canadian Real Estate Association (CREA) and identify real estate professionals who are members of CREA (REALTOR®, REALTORS®) and/or the quality of services they provide (MLS®, Multiple Listing Service®)

Listing information last updated on April 9th, 2025 at 10:17am MDT