

## \$2,500,000 - N/A, Rural Parkland County

MLS® #E4429841

**\$2,500,000**

5 Bedroom, 5.50 Bathroom, 4,889 sqft

Rural on 3.00 Acres

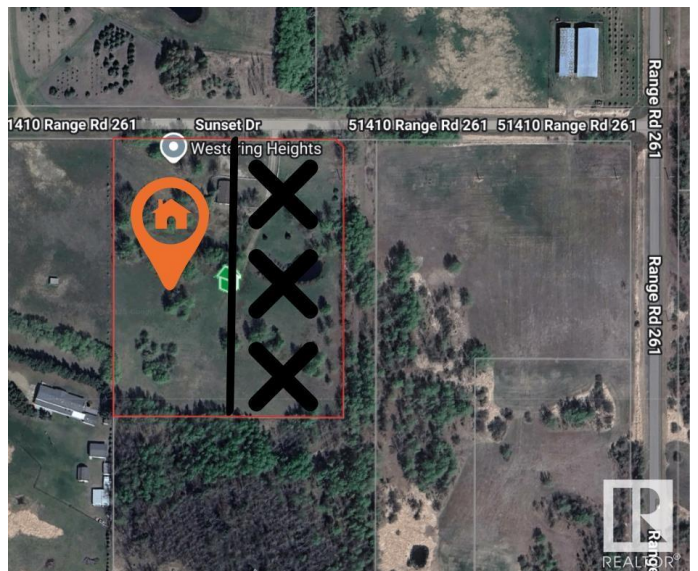
Westering Heights (Parkland), Rural Parkland County, AB

Great opportunity to own a luxury estate on a 3-acre parcel just 10 mins from the Anthony Henday close to Costco, River Cree & all amenities. This stunning 2-storey home offers almost 5,000 sq. ft. of above-grade living space, a 4-car garage, & a walkout bsmt backing onto green space. Upstairs: 5 spacious bdrms, each w/ its own ensuite & walk-in closet. The primary suite is a true retreat featuring a center island closet, 6-pc ensuite w/ steam shower, coffee bar, & private patio. A bright loft also opens onto its own balcony. Main floor impresses w/ soaring ceilings, a large great rm, formal dining, & an oversized kitchen + spice kitchen. The walkout bsmt is left unfinished offering you the chance to build out your dream lower level. Enjoy luxury living surrounded by nature, just minutes from city life. Premium finishes, open-concept design, and space to grow this home blends elegance, comfort, and function in a really great setting.

Built in 2025

### Essential Information

MLS® #	E4429841
Price	\$2,500,000
Bedrooms	5



Bathrooms	5.50
Full Baths	5
Half Baths	1
Square Footage	4,889
Acres	3.00
Year Built	2025
Type	Rural
Sub-Type	Detached Single Family
Style	2 Storey
Status	Active

### Community Information

Address	N/A
Area	Rural Parkland County
Subdivision	Westering Heights (Parkland)
City	Rural Parkland County
County	ALBERTA
Province	AB
Postal Code	T7Y 1B4

### Amenities

Features	See Remarks
Parking Spaces	7

### Interior

Interior Features	ensuite bathroom
Heating	Forced Air-1, Natural Gas
Stories	2
Has Basement	Yes
Basement	Full, Unfinished

### Exterior

Exterior	Wood
Exterior Features	Cul-De-Sac, Landscaped, No Through Road, Private Setting
Construction	Wood
Foundation	Concrete Perimeter

### Additional Information

Date Listed	April 9th, 2025
-------------	-----------------

Days on Market 6

Zoning Zone 90

DATA IS DEEMED RELIABLE BUT IS NOT GUARANTEED ACCURATE BY THE REALTORS® ASSOCIATION OF EDMONTON. COPYRIGHT 2025 BY THE REALTORS® ASSOCIATION OF EDMONTON. ALL RIGHTS RESERVED. Trademarks are owned or controlled by the Canadian Real Estate Association (CREA) and identify real estate professionals who are members of CREA (REALTOR®, REALTORS®) and/or the quality of services they provide (MLS®, Multiple Listing Service®)

Listing information last updated on April 15th, 2025 at 6:47pm MDT