

Courtesy Of Lori Hunt Of RE/MAX River City

\$738,000 - 19530 Township 514, Rural Beaver County

MLS® #E4429939

\$738,000

3 Bedroom, 2.50 Bathroom, 1,932 sqft

Rural on 10.01 Acres

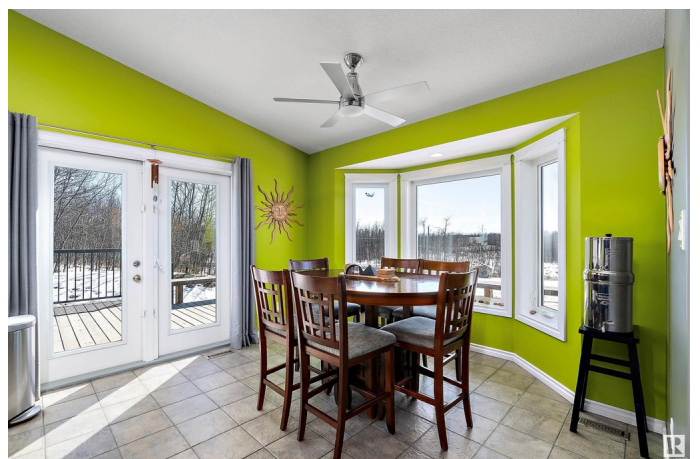
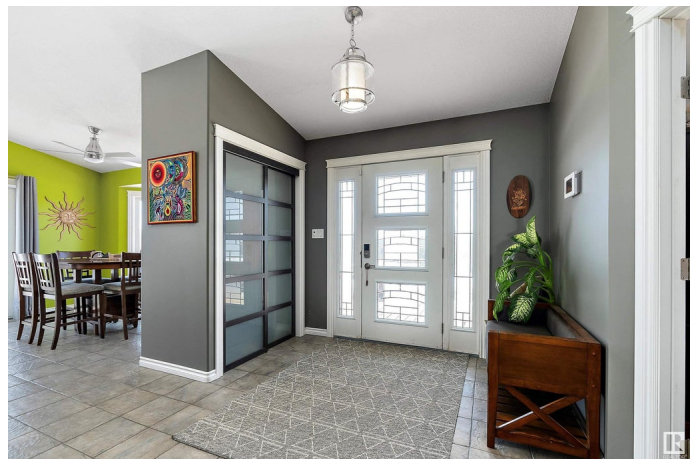
None, Rural Beaver County, AB

Escape to your private paradise! This uniquely appointed Custom 4-level split sprawls over 10.01 acres of low-maintenance beauty just 30 minutes to Sherwood Park. With over 3800 sq ft of living space, this meticulously maintained home features 3 bedrooms, 2.1 baths, and room to develop 2 more bedrooms. Vaulted ceilings, a custom kitchen with quartz counters, hardwood and ceramic tile floors, vinyl windows, and a wood stove create a blend of warmth and elegance. The walkout basement leads to a 2200 sq ft, multi-level deck overlooking a show-stopping pond with waterfall and custom rock work. Bonus room, huge family room, greenhouse, garden, and a double oversized attached garage round out the space. There is also a top-of-the-line four-stage septic system and 2-2,000 gallon cisterns. This property is built for living large, entertaining loud, and relaxing hard!

Built in 2015

Essential Information

MLS® #	E4429939
Price	\$738,000
Bedrooms	3
Bathrooms	2.50
Full Baths	2
Half Baths	1



Square Footage	1,932
Acres	10.01
Year Built	2015
Type	Rural
Sub-Type	Detached Single Family
Style	4 Level Split
Status	Active

Community Information

Address	19530 Township 514
Area	Rural Beaver County
Subdivision	None
City	Rural Beaver County
County	ALBERTA
Province	AB
Postal Code	T0B 4J1

Amenities

Features	Closet Organizers, Crawl Space, Deck, Detectors Smoke, Front Porch, Greenhouse, Hot Water Electric, No Smoking Home, Parking-Extra, R.V. Storage, Vaulted Ceiling, Vinyl Windows, Walkout Basement
Parking Spaces	10

Interior

Interior Features	ensuite bathroom
Heating	Forced Air-1, Propane
Fireplace	Yes
Stories	4
Has Basement	Yes
Basement	Full, Finished

Exterior

Exterior	Wood
Exterior Features	Corner Lot, Golf Nearby, Low Maintenance Landscape, Private Setting, Rolling Land, Shopping Nearby, Subdividable Lot, Treed Lot, Vegetable Garden, Partially Fenced
Construction	Wood
Foundation	Insulated Concrete Form

Additional Information

Date Listed April 9th, 2025

Days on Market 7

Zoning Zone 80

DATA IS DEEMED RELIABLE BUT IS NOT GUARANTEED ACCURATE BY THE REALTORS® ASSOCIATION OF EDMONTON. COPYRIGHT 2025 BY THE REALTORS® ASSOCIATION OF EDMONTON. ALL RIGHTS RESERVED. Trademarks are owned or controlled by the Canadian Real Estate Association (CREA) and identify real estate professionals who are members of CREA (REALTOR®, REALTORS®) and/or the quality of services they provide (MLS®, Multiple Listing Service®)

Listing information last updated on April 16th, 2025 at 11:32am MDT