

# **\$975,000 - 53510 Range Road 20, Rural Lac Ste. Anne County**

MLS® #E4430577

**\$975,000**

3 Bedroom, 3.00 Bathroom, 5,262 sqft  
Rural on 7.00 Acres

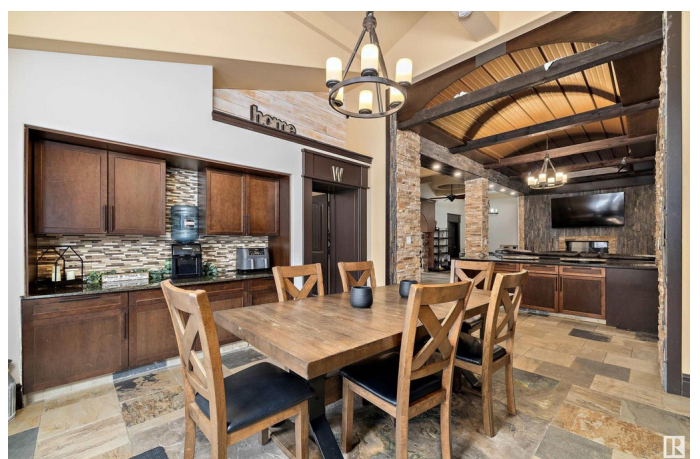
None, Rural Lac Ste. Anne County, AB

Welcome to your country dream, a timber frame bardominium, with over 5000 sq ft, on 7 acres, with an 8300 sq ft shop! Enter through the stone arch & stamped concrete elevated path. Below, detailed tile work & set up for a koi fish pond. The main floor boasts a 25' high entrance with 12' timber frame trusses, custom stonework, slate floors & stairs. The entire main floor has in-floor heat with 4 zones, 3 bdrms, one of them is complete with a walk-in closet, 4 pc ensuite with a round jacuzzi tub. Open concept entertainment area with large living room, double-sided fireplace, kitchen with huge granite island, custom 8ft high cabinets an 12'ceilings. Games room with wet bar attached. 2 additional bonus rooms, laundry and 5 pc bath also on main. Retreat to your 1100 sqft primary bdrm with 2 W/I closets, 5 pc ensuite including elevated jacuzzi tub, & its own laundry! Home has attached double tandem garage on one side, single on the other. Shop offers heated workspace w/tons of room for your toys or business!

Built in 1997

## **Essential Information**

|        |           |
|--------|-----------|
| MLS® # | E4430577  |
| Price  | \$975,000 |



|                |                        |
|----------------|------------------------|
| Bedrooms       | 3                      |
| Bathrooms      | 3.00                   |
| Full Baths     | 3                      |
| Square Footage | 5,262                  |
| Acres          | 7.00                   |
| Year Built     | 1997                   |
| Type           | Rural                  |
| Sub-Type       | Detached Single Family |
| Style          | 2 Storey               |
| Status         | Active                 |

### Community Information

|             |                            |
|-------------|----------------------------|
| Address     | 53510 Range Road 20        |
| Area        | Rural Lac Ste. Anne County |
| Subdivision | None                       |
| City        | Rural Lac Ste. Anne County |
| County      | ALBERTA                    |
| Province    | AB                         |
| Postal Code | T0E 2P0                    |

### Amenities

|          |  |
|----------|--|
| Features | Air Conditioner, Bar, Closet Organizers, Deck, Detectors Smoke, Fire Pit, Gazebo, Guest Suite, Hot Tub, Insulation-Upgraded, Wet Bar, Workshop |
|----------|--|

### Interior

|                   |                                   |
|-------------------|-----------------------------------|
| Interior Features | ensuite bathroom                  |
| Heating           | In Floor Heat System, Natural Gas |
| Stories           | 2                                 |
| Has Basement      | Yes                               |
| Basement          | None, No Basement                 |

### Exterior

|                   |   |
|-------------------|---|
| Exterior          | Wood  |
| Exterior Features | Backs Onto Park/Trees, Fenced, Landscaped, Private Setting, Treed Lot |
| Construction      | Wood  |
| Foundation        | Piling  |

### Additional Information

Date Listed April 11th, 2025

Days on Market 4

Zoning Zone 90

DATA IS DEEMED RELIABLE BUT IS NOT GUARANTEED ACCURATE BY THE REALTORS® ASSOCIATION OF EDMONTON. COPYRIGHT 2025 BY THE REALTORS® ASSOCIATION OF EDMONTON. ALL RIGHTS RESERVED. Trademarks are owned or controlled by the Canadian Real Estate Association (CREA) and identify real estate professionals who are members of CREA (REALTOR®, REALTORS®) and/or the quality of services they provide (MLS®, Multiple Listing Service®)

Listing information last updated on April 15th, 2025 at 7:17pm MDT