

# \$350,000 - 11016 166 Avenue, Edmonton

MLS® #E4431146

## \$350,000

5 Bedroom, 2.50 Bathroom, 1,205 sqft  
Single Family on 0.00 Acres

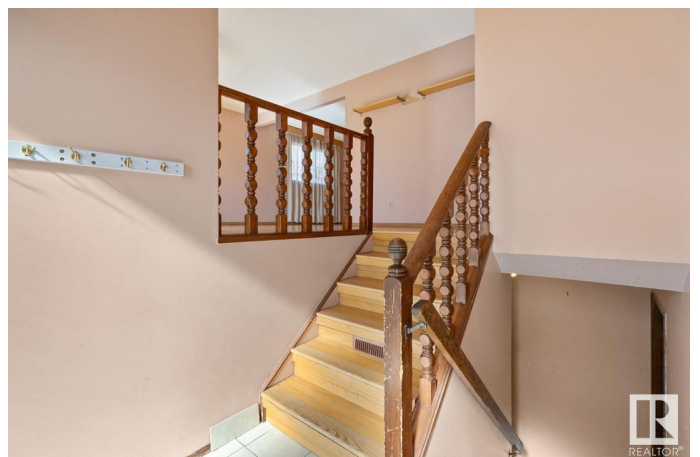
Lorelei, Edmonton, AB

Tons of potential in this Lorelei bi-level, featuring 5 bedrooms, 2.5 baths, SECOND KITCHEN & oversized DOUBLE garage. Hardwood floors throughout the family sized living room & dining area. The eat in kitchen offers plenty of cabinets. King sized primary with 2pc ensuite. 2 more generous sized bedrooms & 4pc bath complement the functional layout. The basement offers a good sized living room, second kitchen, 2 bedrooms, 4pc bath & tons of storage space. Fenced & landscaped yard with patio and access to the double garage. Awesome location, steps away from parks, trails, shopping & all amenities

Built in 1976

## Essential Information

MLS® #	E4431146
Price	\$350,000
Bedrooms	5
Bathrooms	2.50
Full Baths	2
Half Baths	1
Square Footage	1,205
Acres	0.00
Year Built	1976
Type	Single Family
Sub-Type	Detached Single Family



Style Bi-Level  
Status Active

### Community Information

Address 11016 166 Avenue  
Area Edmonton  
Subdivision Lorelei  
City Edmonton  
County ALBERTA  
Province AB  
Postal Code T5X 1Y3

### Amenities

Amenities Patio, See Remarks  
Parking Double Garage Detached, Over Sized

### Interior

Interior Features ensuite bathroom  
Appliances Dryer, Refrigerator, Stove-Electric, Washer  
Heating Forced Air-1, Natural Gas  
Stories 2  
Has Basement Yes  
Basement Full, Partially Finished

### Exterior

Exterior Wood, Vinyl  
Exterior Features Cul-De-Sac, Fenced, Landscaped, Playground Nearby, Public Transportation, Schools, Shopping Nearby, See Remarks  
Roof Asphalt Shingles  
Construction Wood, Vinyl  
Foundation Concrete Perimeter

### Additional Information

Date Listed April 16th, 2025  
Days on Market 3  
Zoning Zone 27

DATA IS DEEMED RELIABLE BUT IS NOT GUARANTEED ACCURATE BY THE REALTORS® ASSOCIATION OF EDMONTON. COPYRIGHT 2025 BY THE REALTORS® ASSOCIATION OF EDMONTON. ALL RIGHTS RESERVED. Trademarks are owned or controlled by the Canadian Real Estate Association (CREA) and identify real estate professionals who are members of CREA (REALTOR®, REALTORS®) and/or the quality of services they

provide (MLS® , Multiple Listing Service®)

Listing information last updated on April 19th, 2025 at 3:17pm MDT